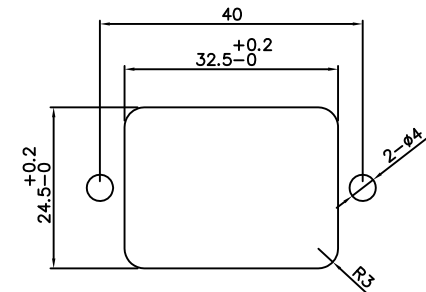
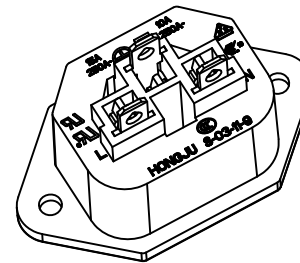
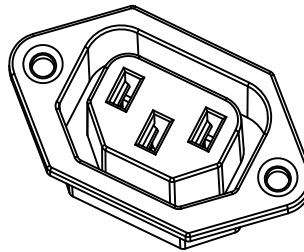
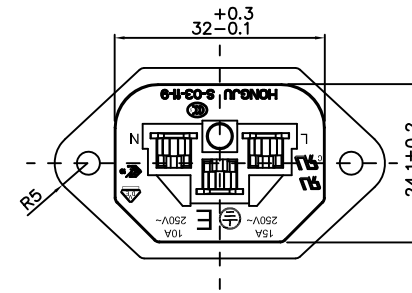
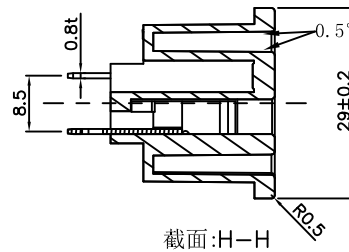
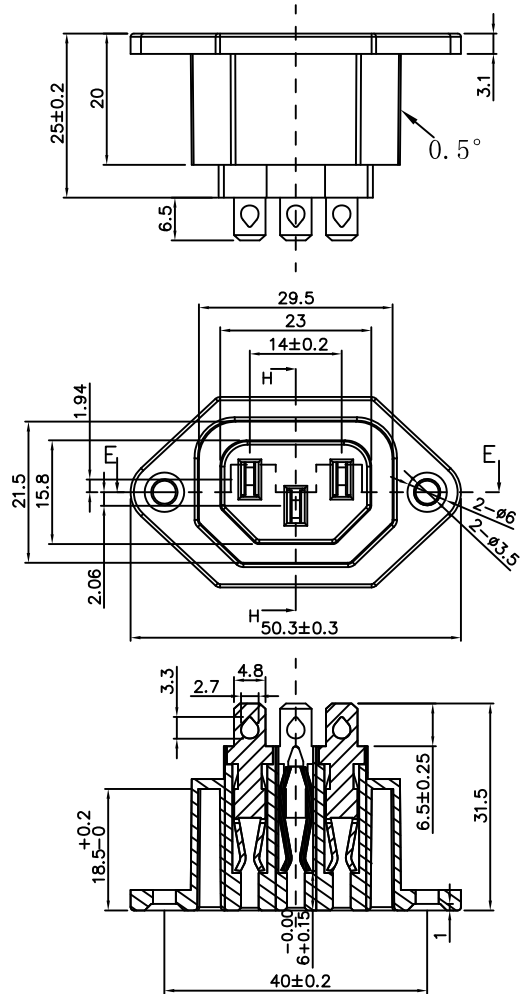




东莞市宏聚电子五金制品有限公司

HONGJU(DONGGUAN)ELECTRONIC & METAL PRODUCTS CO.,LTD

Rating:10A 250V AC (CCC)
 15A 250V AC(UL CUL)
 Contact Resistance: 50mΩ Max
 Insulation Resistance: DC 500V 100MΩ Min
 Dielectric Strength: AC2000V 1 minute
 Operating Temperature: 0°C ~85°C



MATERIAL:

Body:PBT+15%GF

Terminal:Brass silver or tin plated

截面:E-E

| | | 公差 TOLERANCES | | .X± 0.3 .XX± 0.15 | | 角度 ± 1° | | 单位 DIMENSION UNIT | | mm. |
|---------|-------------------------|---------------|---------|-------------------|------------|----------|------------|-------------------|---------------|-----|
| | | 版本 VERSION | A1 | 比例尺 SCALE | NONE | 日期 DATE | 2019.03.26 | 品名 TITLE | 图号 DRAWING NO | |
| A1 | 重新整理发行 | 2019.03.26 | N/A | 核准 | 核对 | Z. H. B. | 绘图 | S-03-11-9 | S-03-11-9_A1 | |
| A0 | 新发行 | 2017.01.05 | N/A | 核准备案 | 核准备案 | | HXG | | | |
| 版本 VER. | 变更说明 CHANGE DESCRIPTION | 日期 DATE | ECN NO. | APPROVED BY | CHECKED BY | Z. H. B. | DRAWN BY | | | |

File Code: HJ-WI-E-03A