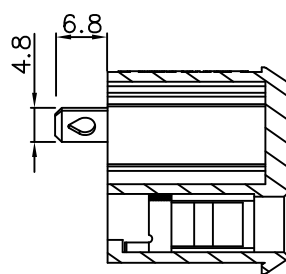
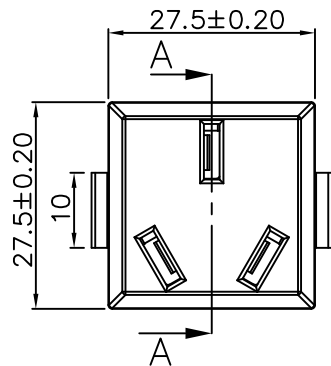
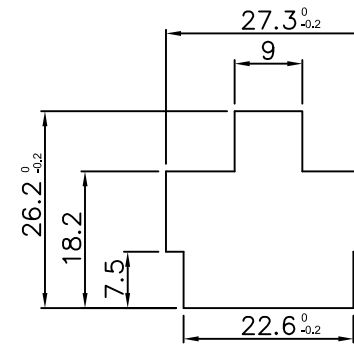
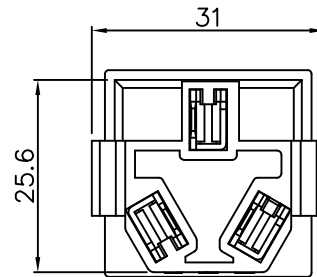


Rating:10A 250V AC (3C)
Contact Resistance: 50mΩ Max
Insulation Resistance: DC 500V 100MΩ Min
Dielectric Strength: AC2000V 1 minute
Electrical life: 10,000 cycles
Operating Temperature: 0°C ~ 85°C

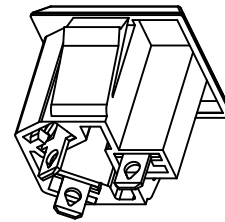
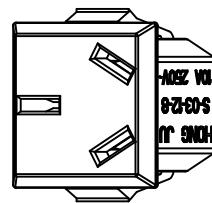
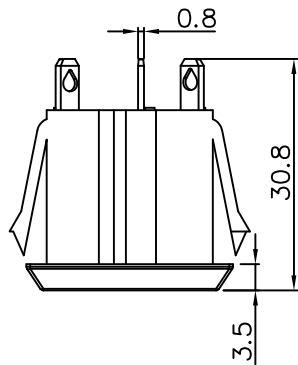


截面:A-A



CUT-OUT

Panel Thickness:1~3mm



MATERIAL:

Body:PA66

Terminal:Brass silver or tin plated

				公差 TOLERANCES		.X± 0.3 .XX± 0.15	角度	± 1°	单位 DIMENSION UNIT	mm.	
				版本 VERSION	A0	比例尺 SCALE	NONE	日期 DATE	2020.06.19	品名 TITLE	图号 DRAWING NO
				核准		核对		绘图	Z. H. B.	S-03-12-8	S-03-12-8-A0
版本 VER.	变更说明 CHANGE DESCRIPTION	日期 DATE	ECN NO.	APPROVED BY		CHECKED BY		DRAWN BY			